

DESCRIPTION

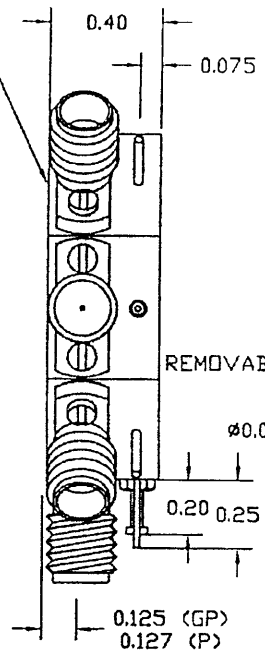
AMC MODEL SWN-1140-6DR-DEC-SP-FM10 IS A SINGLE POLE SIX THROW, REFLECTIVE SWITCH MODULE WITH VERY LOW INSERTION LOSS, HIGH SPEED, AND WITH INTEGRAL TTL DRIVER, DESIGNED FOR BROAD BAND OR NARROW BAND OPERATIONS.

SPECIFICATIONS:

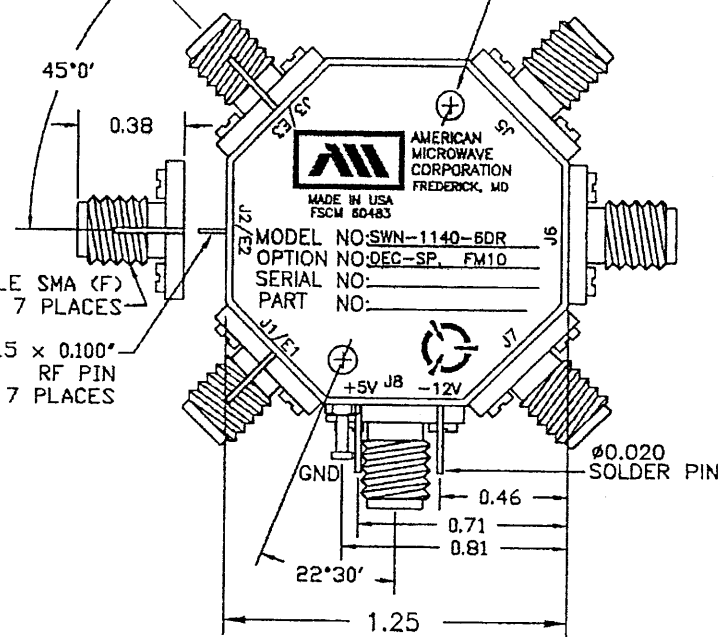
- FREQUENCY: 5.5 GHz TO 6.0 GHz
- INSERTION LOSS: 1.0 dB MAXIMUM
0.8 dB TYPICAL
0.6 dB GOAL
- ISOLATION: 40 dB MINIMUM
- VSWR: 2.0:1 MAXIMUM
- SPEED: TURN ON: 60ns MAXIMUM
TURN OFF: 60ns MAXIMUM
- RF POWER INPUT: 0.25 WATT
- CONTROL: TTL SEE LOGIC TABLE
- POWER SUPPLY: +5V @ 320 mA MAXIMUM
-12V @ 50mA MAXIMUM
- RF CONNECTORS: REMOVABLE SMA FEMALE
- SIZE: Ø1.25 POINT TO POINT x 0.400 (H)
- WEIGHT: 2.75 OUNCES

REVISIONS				
ZONE	REV.	DESCRIPTION	DATE	APPROVED
-	-	ORIGINAL JOB# 901011E	08/04/00	

MOUNTING SURFACE
GP=GOLD PLATED
P=PAINTED



Ø0.089 THRU W/4-40 THD
0.250 DEEP ON MOUNTING SURFACE
LOCATED ON 1.00" CIRCLE, 2 PLACES



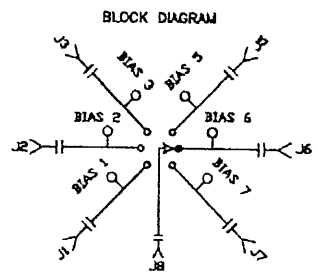
AMERICAN
MICROWAVE
CORPORATION
FREDERICK, MD
MADE IN USA
FSCM 60483

MODEL NO: SWN-1140-BDR
OPTION NO: DEC-SP, FM10
SERIAL NO:
PART NO:

NOTE:
DR=WITH DRIVER, REFLECTIVE
DT=WITH DRIVER, NON-REFLECTIVE/ABSORPTIVE

CONFIDENTIAL AND PROPRIETARY

LOGIC TABLE			
E1	E2	E3	PATH ON
L	L	L	J1
H	L	L	J2
L	H	L	J3
H	H	L	J5
L	L	H	J6
H	L	H	J7



ENVIRONMENTAL RATINGS:

- TEMPERATURE: -55°C TO +85°C (OPERATING)
-65°C TO +125°C (STORAGE)
- HUMIDITY: MIL-STD-202F, METHOD 103B COND. B
- SHOCK: MIL-STD-202F, METHOD 213B COND. B
- VIBRATION: MIL-STD-202F, METHOD 204D COND. B
- ALTITUDE: MIL-STD-202F, METHOD 105C COND. B
- TEMPERATURE CYCLE: MIL-STD-202F, METHOD 107D COND. A

ALL DIMENSIONS ARE IN INCHES
TOLERANCES:
X.XX ±0.020
X.XXX ±0.010

NOTE: THE ABOVE SPECIFICATIONS ARE SUBJECT TO CHANGE OR REVISION

CONTRACT NO.		AMERICAN MICROWAVE CORPORATION FREDERICK, MARYLAND	
APPROVALS	DATE	TITLE OUTLINE DRAWING SWN-1140-6DR-DEC-SP-FM10 REFLECTIVE RADIAL SOLID STATE SWITCH	
DRAWN WBCP	08/04/00	SIZE A	FSCM NO. 60483
CHECKED CA	08/14/00	DWG NO. 100-4169-3	REV. -
ISSUED WJP	08/16/00	SCALE N/S	SHEET 1 of 3

PAGE 4 (T11-S-RA-0699)